

# Whistler Creekside



## Venue description

With more than two million visitors a year, Whistler is consistently ranked as the number one ski resort in North America. The resort has extensive experience hosting International Ski Federation (FIS) World Cup competitions.

The men's Olympic alpine skiing events will be held on the Dave Murray Downhill. The ladies' Olympic alpine skiing course and the Paralympic alpine skiing events will take place on Franz's Run.

**Olympic Winter Games venue capacity: 7,600**

**Paralympic Winter Games venue capacity: 6,000**

**Finish area elevation: 810 metres**

## Olympic Winter Games events

There are a total 10 events:

**Downhill** — men's and ladies'

**Super-G** — men's and ladies'

**Giant slalom** — men's and ladies'

**Slalom** — men's and ladies'

**Super combined** — men's and ladies'

## Paralympic Winter Games events

There are a total of 15 events in three classes — standing, sitting and visually impaired:

**Downhill** — men's and women's

**Super-G** — men's and women's

**Giant slalom** — men's and women's

**Slalom** — men's and women's

**Super combined** — men's and women's

## Timeline

Venue improvements began in summer 2006 and were completed in the fall of 2007.

## VANOC investment

Improvements to Whistler Creekside are estimated at \$27.6 million. The governments of Canada and British Columbia agreed to jointly fund new construction and upgrades.

## Post-Games use

Whistler Creekside will continue to offer a world-class ski area to recreational skiers and will be a site for future international competitions and Canadian team training.

## Sustainable attributes

- federal (CEAA) environmental assessment review process
- smart site selection — venue located on existing ski trails within major ski area
- use of existing ski hill infrastructure (for example, buildings, chairlifts, gondolas)
- all wood waste chipped and re-used on site
- leading-edge, high energy-efficient snowmaking system for race courses
- proactive construction management to avoid and minimize potential impact to wildlife and aquatic and terrestrial habitat
- significant reductions achieved in total amount of riparian vegetation removed for the training and race courses compared to the amount proposed/approved for clearing in the initial design plans and EA approval
- post-Games legacy of enhanced training, racing and recreational ski trails

More sustainability facts about this venue and others are available at [vancouver2010.com/sustainability](http://vancouver2010.com/sustainability).

## Scope of work for 2010

Improvements include contouring and reshaping of the men's and ladies' downhill courses, and additions to the existing snowmaking system.

## Sport governing bodies

**International Federations:**

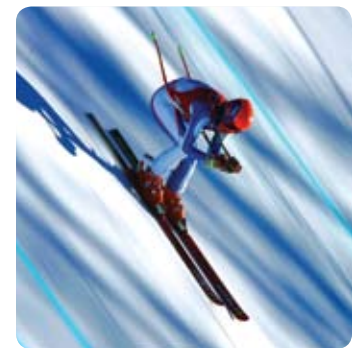
**International Paralympic Committee (IPC)**

**International Ski Federation (FIS)**

**Canadian Federation:**

**Alpine Canada Alpin (ACA)**

# Whistler Creekside



## QUICK FACTS

### Whistler Mountain

- In the early 1960s, Franz Wilhelmsen and a group of Vancouver businessmen formed [Garibaldi Lifts Limited](#) with the dream of hosting the 1968 Olympic Winter Games.
- With a four-person gondola, a double chairlift, two T-bars and a day lodge, [Whistler officially opened for skiing in February 1966](#).
- Together, Whistler and Blackcomb Mountains currently boast [8,171 acres of terrain](#), 39 lifts including the record-breaking PEAK 2 PEAK Gondola (opening December 2008), and more than 200 trails.
- In 1989, [Rob Boyd](#) became the first Canadian male to win a World Cup downhill in his own hometown (Whistler).
- The [Whistler Weasel Workers](#) are a group of local race volunteers who have travelled around the world assisting with alpine skiing events.

## QUICK FACTS

### Alpine Skiing

- Alpine skiing became part of the Olympic program at the Garmisch-Partenkirchen 1936 Games with a men's and ladies' combined event.
- The last Canadians to earn an alpine skiing medal at an Olympic Winter Games were [Ed Podivinsky](#) (1994, bronze) and [Kerrin Lee-Gartner](#) (1992, gold).
- At the 2008 FIS Alpine World Cup in Whistler, the top placing Canadian athletes were [Britt Janyk](#) (4th in ladies' downhill) and [Eric Guay](#) (4th in men's super-G).
- The [top speed](#) of the world's fastest alpine ski racers has been clocked at [148 kilometres per hour](#).
- [Paralympic alpine skiing](#) was introduced at the first Paralympic Winter Games in 1976 in [Örnsköldsvik, Sweden](#).
- Paralympic alpine skiing is governed by the IPC with coordination by the [IPC Alpine Skiing Technical Committee](#), using the rules of the FIS with minor modifications.
- The [super combined event](#) will debut at the Paralympic Winter Games in 2010.
- At the Torino 2006 Paralympic Winter Games, the Canadian Alpine team earned [five podium medals](#).